



JUNGDO SPECIAL WELDING

▶ 목 차 (LIST)

1. 회사소개(company)

- 1.1 인사말(Greeting)
- 1.2 경영방침(Policy)
- 1.3 조직도(Organization)
- 1.4 인증서(Certificate)
- 1.5 연혁 & 오시는 길
(History&Location)
- 1.6 주요 고객사
(Major companies)

2. 생산품목(Products)

- 2.1 건설장비 부품
(Construction Equip Items)
- 2.2 밸브부품(Valve PRT)
- 2.3 안전밸브부품
(Safety&Relief Valve PRT)
- 2.4 산업설비부품
(Industrial facilities PRT)
- 2.5 열교환기 파이프류
(Heater/EX Pipe)

3. 장비현황(Equipment)

- 3.1 장비/리스트(Eq/List)
- 3.2 검사/리스트(Insp/List)

1. 회사소개 (COMPANY)

1.1 인사말(Greeting)

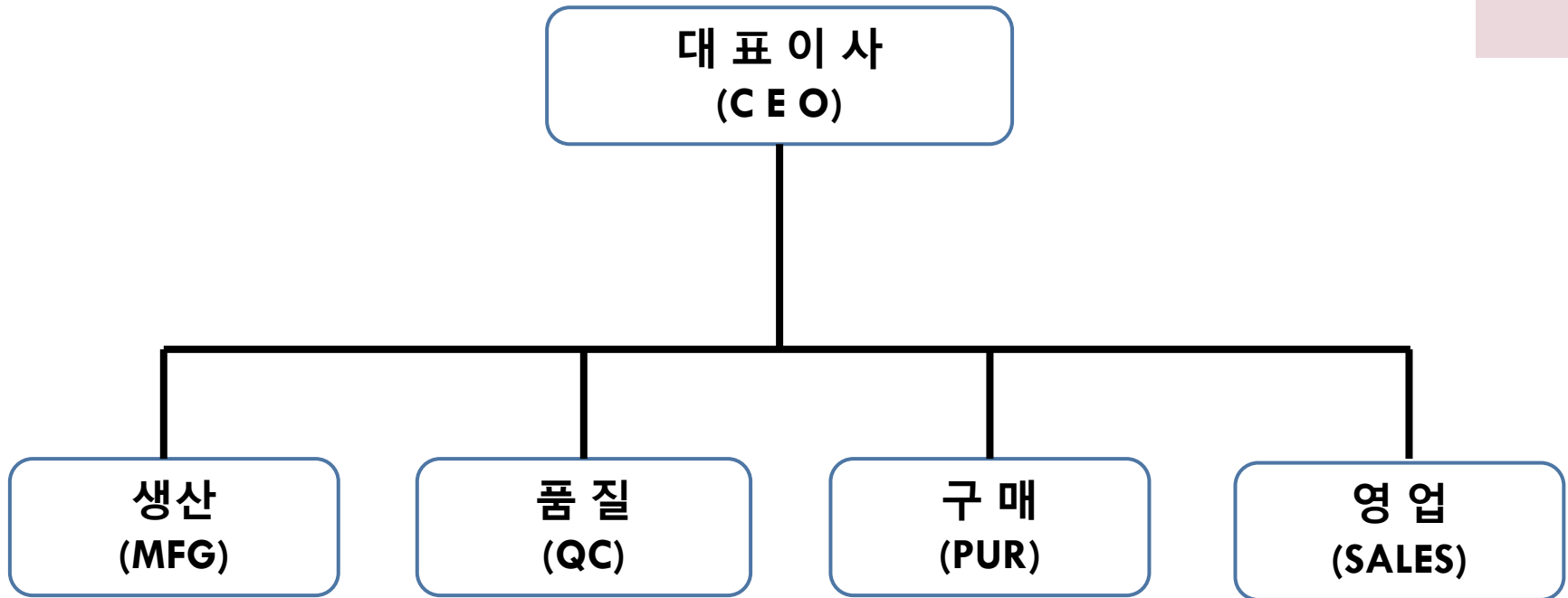
- ▶ 2019년 설립한 정도는 오직 특수용접 한 분야에 끊임없는 노력과 열정을 쏟아온 사람들로 채워진 용접 전문 업체 입니다.
- ▶ (Founded in 2019, JUNGDO is a filled with people who have devoted constant effort and passion to special welding.)
- ▶ 특히 Hardfacing 용접 분야에 있어서는 전 직원이 관련 자격증을 보유하고 있고 충분한 현장작업으로 숙련된 기술력을 보유하고 있습니다.

(In particular, in the field of hardfacing welding, all employees have relevant qualifications and sufficient field work to provide skilled technical skills.)

- ▶ 앞으로도 저희 정도는 다양하고 최적화된 용접작업을 통해 고객님들로 하여금 최고의 가치를 창출할 수 있도록 최선을 다 하겠습니다.

(We will continue to do our best to create the best value for our customers through a variety of optimized welding operations.)

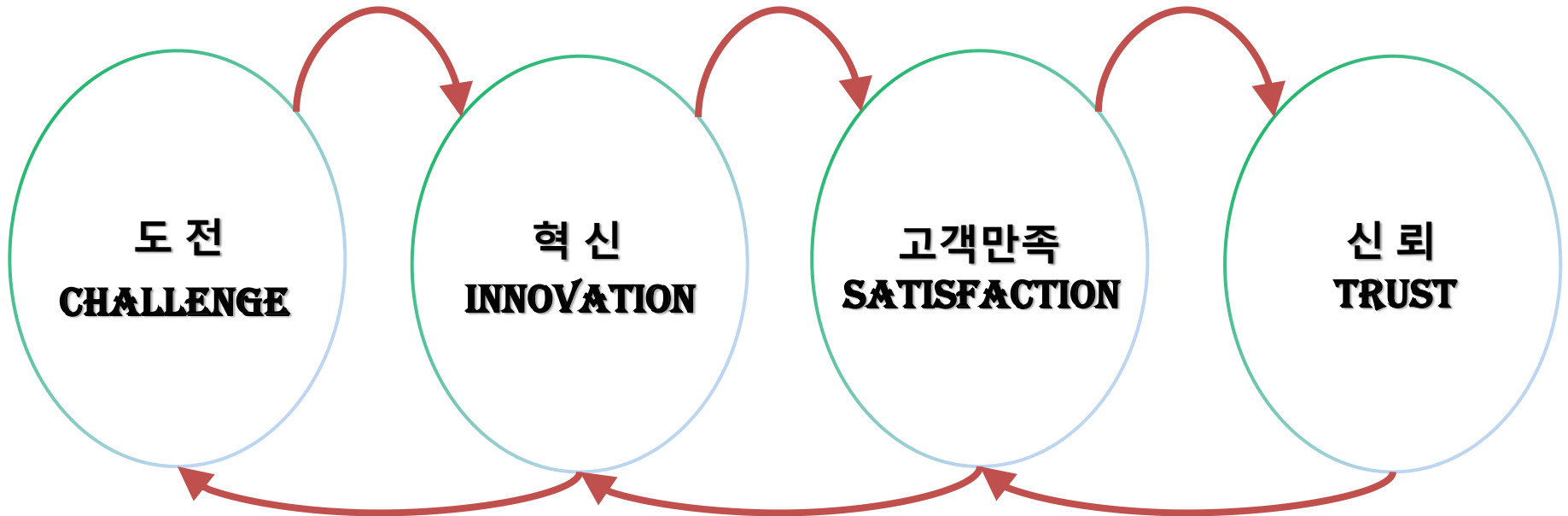
1.3 조직도(Organization)



1.2 경영 방침(Policy)

당사는 항상 도전하여 혁신된 기술로 고객만족을 가치로 신뢰할수 있는 회사가 되도록 최선을 다하겠습니다.

(We will always challenge ourselves and do our best to become a company that can trust our customers with innovative technologies.)



1.4 인증서(Certificate) - KS Q ISO 9001 : 2015



MANAGEMENT SYSTEM CERTIFICATE

정도

부산광역시 강서구 미음산단1로15번길 11 (구량동)

적용 표준
KS Q ISO 9001:2015

인증 범위
이종육성 용접

위와 같이 경영시스템 표준에 적합함을 인증합니다.

인증번호: SMI-2030Q
유효기간: 2021/03/24 ~ 2024/03/23
발행일자: 2021/03/24
최초 인증일자: 2021/03/24

대표이사/원장
승인 



한국표준경영인증원
서울시 관천구 가산디지털1로 212, 1409호
(가산동, 코오롱디지털타워에스틴)
www.smi21.com Tel.02-6677-9002 Fax. 02-6677-9003




KAB-QC-42

↔ 이크는 한국인증원(KAB)으로부터 품질(KAB-QC-42) 및 환경(KAB-EC-37) 경영체제 인증기관으로 인정되었음을 나타내는 인정마크입니다.
IAF 이크는 국제인증협력기구의 국제 다자간 상호인정 협정에 가입된 인정기관에 의해 인정되었음을 나타내는 마크입니다.



MANAGEMENT SYSTEM CERTIFICATE

The management system of
JUNGDO

11, Mieumsandan 1-ro 15beon-gil, Gangseo-gu, Busan, KOREA

Has been assessed and certified as meeting the requirements of
KS Q ISO 9001:2015

For the following activities
Overlay Welding

Certificate No.: SMI-2030Q
Valid Date: 24 Mar. 2021 ~ 23 Mar. 2024
Issue date: 24 Mar. 2021
Original issue date: 24 Mar. 2021

Jin-Shik Ha 
CEO & President



Standard Management Ins.
#1409, 212, Gasan digital 1-ro,
Geumcheon-gu, Seoul, KOREA
www.smi21.com T. 82-2-6677-9002 F. 82-2-6677-9003




KAB-QC-42

↔ Mark indicates that SMI is accredited by the KAB (QMS: KAB-QC-42, EMS: KAB-EC-37).
IAF Mark indicates that SMI is accredited by the member of the International Accreditation Forum Multilateral Recognition Arrangement.

1. 회사소개 (COMPANY)

1.5 회사 연혁 & 오시는 길 (History & Location)

- ▶ 회사명(Company name) : 정 도(Jung do)
- ▶ 대표이사(CEO) : 문 성 우(Moon seong u)
- ▶ 설립일(Date of Estabuliishment) : 2019년 4월(Apr.2019)
- ▶ 자본금(Capital) : 1억원(one hundred million KR WON)
- ▶ 직원수(Employees) : 5명(Five)
- ▶ 소재지(Location): 부산시 강서구 미음산단1로 15번길 11
(11, Mieumsandan 1-ro 15beon-gil, Gangseo-gu, Busan, Republic of Korea)
- ▶ 연락처(Contact)
 - ▶ Tel : 051-973-9985, +82 51-973-9985
 - ▶ Fax : 051-973-9989, +82 51-973-9989
 - ▶ C.P : 010-5701-4944, +82 10-5701-4944
 - ▶ E-mail : jungdo424@naver.com

1. 회사소개 (COMPANY)

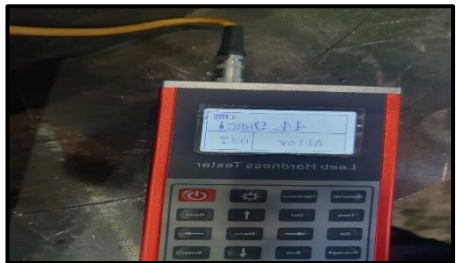
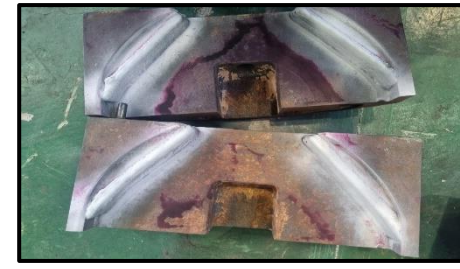
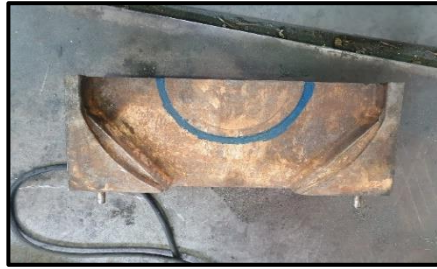
1.6 주요 고객사(Major companies)



2. 생산품목(PRODUCTS)

2.1 건설 장비 부품(Construction Equipment Items)

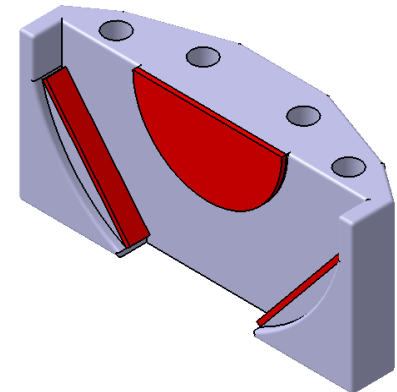
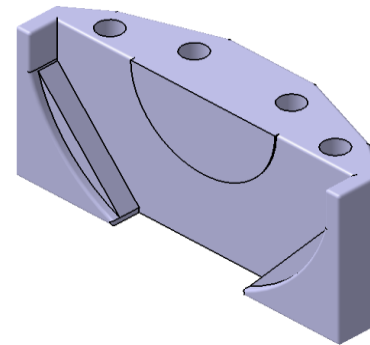
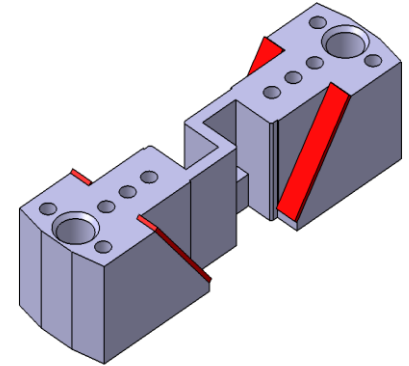
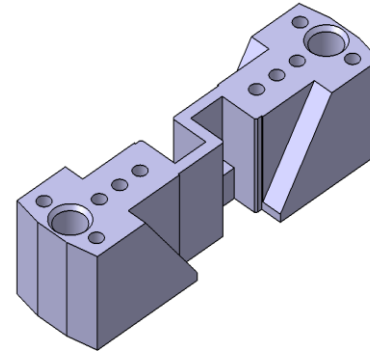
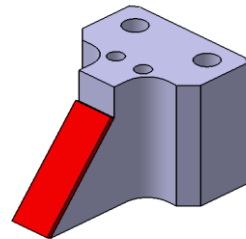
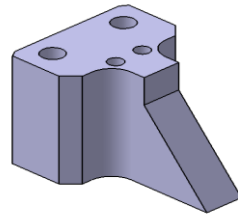
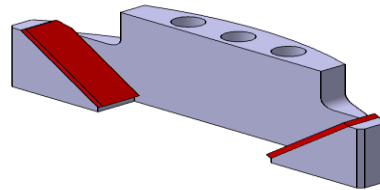
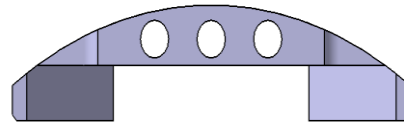
- ▶ ▶ 현대건설 파주건설현장 19" Face - Block SCM440 + ERCoCr-A(Stellite#6) Hardfacing
- ▶ 목적 : 기존 부품의 경도향상으로 소모 부품의 교체주기를 연장, 공사기간 단축



2. 생산품목(PRODUCTS)

2.1 건설 장비 부품(Construction Equipment Items)

◀ 현대건설 파주 현장 FASTENING SET ▶



2. 생산품목(PRODUCTS)

2.2 밸브부품(Valve PRT) - BODY

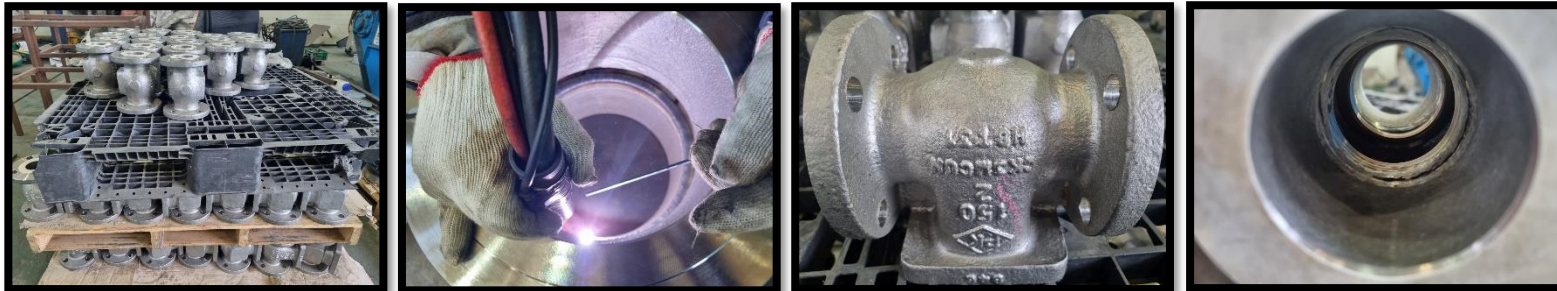
TYPE	GATE VA BODY	SWING CHECK VA BODY	GLOBE VA BODY	BONNET
MATERIAL	WCB, WC6, WC9, LCB, LCC, CF8, CF8M, CA12, CA12A, CK3MCUN, CW12MW			
SIZE	CLASS150~600 NPS 2" ~ NPS 42"	CLASS 150 ~ 600 NPS 2" ~ NPS 42"	CLASS 150 ~ 600 NPS 2" ~ NPS 42"	CLASS 150 ~ 600 NPS 2" ~ NPS 32"
WORK	BODY Seat surface, Seat + Ring, Gasket surface, Disc guide Hardfacing, Overlay welding			Bonnet seat Hardfacing welding
Welding Process and weld metal	PAW : Stellite 1, Stellite 6, Stellite 12, Stellite 21 GMAW : Inconel600, Inconel625, Inconel825, Monel, Hastelloy, SS410, SS316L, SS304L GTAW : Stellite 1, Stellite 6, Stellite 12, Stellite 21, Inconel600, Inconel625, Inconel825, Monel, Hastelloy others FCAW : 71T, 81T, SS304L, SS316L			

2. 생산품목(PRODUCTS)

▶ BODY SEAT SURFACE WELDING



▶ BODY + SEAT RING WELDING



▶ BODY & DISC & BONNET GUIDE WELDING



2. 생산품목(PRODUCTS)

2.2 밸브부품(Valve PRT) - DISC

TYPE	BUTTERFLY VA DISC	GATE VA DISC	SWING CHECK VA DISC	GLOBE/TDCV VA DISC
MATERIAL	CF8M	WCB, WC6, WC9, LCB, LCC, CF8, CF8M, CA12, CA12A, CK3MCUN, CW12MW		
SIZE	CLASS150 NPS 4" ~ NPS 60"	CLASS 150 ~ 2500 NPS 2" ~ NPS 90"	CLASS 150 ~ 900 NPS 2" ~ NPS 42"	CLASS 150 ~ 2500 NPS 2" ~ NPS 24"
WORK	BODY Seat surface, Seat + Ring, Gasket surface, Disc guide Hardfacing, Overlay welding			Bonnet seat Hardfacing welding
Welding Process and weld metal	PAW : Stellite 1, Stellite 6, Stellite 12, Stellite 21 GMAW : Inconel600, Inconel625, Inconel825, Monel, Hastelloy, SS410, SS316L, SS304L GTAW : Stellite 1, Stellite 6, Stellite 12, Stellite 21, Inconel600, Inconel625, Inconel825, Monel, Hastelloy others FCAW : E71T, E81T-B2, SS304L, SS316L			

2. 생산품목(PRODUCTS)

▶ BUTTERFLY VALVE DISC WELDING



▶ GATE VALVE DISC WELDING



2. 생산품목(PRODUCTS)

▶ SWING CHECK VALVE DISC WELDING



▶ GLOBE VALVE DISC WELDING



2. 생산품목(PRODUCTS)

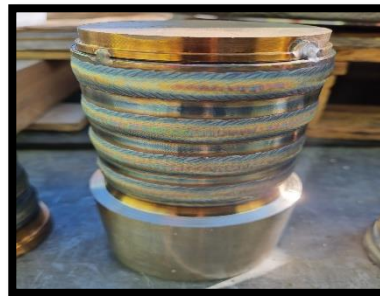
2.3 안전밸브부품(Safety & relief valve PRT)



2. 생산품목(PRODUCTS)

2.4 산업설비 부품(Industrial Facilities PRT)

▶ Replacement shaft housing(Customer : ITT)-Base metal : Duplex+Inconel625+STL.6 or STL.12



▶ Replacement Thermal facilities (Customer : SK Energy/일진텍)-Base metal : Base metal : A516-70+STL.6 or STL.12



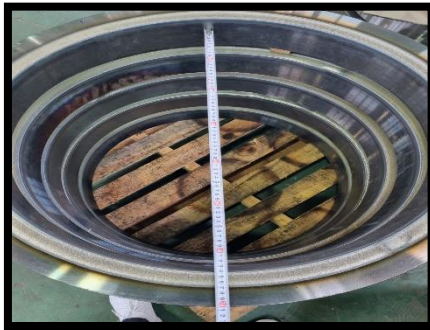
2. 생산품목(PRODUCTS)

2.5 열교환기 파이프류 외 (Heater/EX Pipe and others)

▶ LOWER FORGING (Customer : LG/DJF)-Base metal : A182 F304 + STL.6



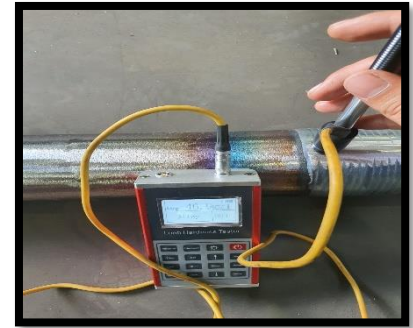
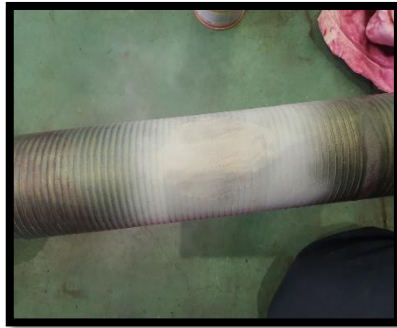
▶ SPLIT RING (Customer : LG/DJF)-Base metal : A182 F304 + STL.6



2. 생산품목(PRODUCTS)

2.5 열교환기 파이프류 외 (Heater/EX Pipe and others)

▶ INNER/OUTER TUBE (Customer : SK Energy/DS tech)-Base metal : A106B + STL.1



▶ INNER/OUTER TUBE (Customer : 한수원/DS tech)-Base metal : CF8M + STL.1



3. 장비(EQUIPMENT)

3.1 장비/리스트(Equipment/List)

장비명 (Equipment)	제원 (Description)	제조사 (Manufacturer)	수량 (Q ' ty)	비고 (remark)
용접기 (Welding MC)	PTA / PAW / 500A	한길 (HANGIL)	2	
용접기 (Welding MC)	MAG / FCAW(Co2) / 600A	효성 (HYOSUNG)	2	
용접기 (Welding MC)	MIG / GTAW(Tig) / 500A	삼진윌텍 (Samjin weld tech)	4	
포지셔너 (Positioner)	Φ1,400 / 10,000KG / 5,000KG	진영윌텍 (Jinyong)	1	
	Φ900 / 700KG	엔에스윌 (NsWEL)	2	
	Φ560 / 300KG	삼흥전기 (Samheung)	2	
턴테이블 (Turn table)	Φ2,000 / 1,000KG	삼흥전기 (Samheung)	1	
	Φ280 / 100KG	에스케이엠티(SKMT)	1	
천정 크레인 (O.V Crane)	5TON / Elevate H : 6M	한국크레인 (KOREA CRANE)	1	
지게차 (Forklift)	D : 500, H : 3,085, Load : 848KG	클라크(CLARK)	1	

3. 장비(EQUIPMENT)

3.2 검사/리스트(Inspection/List)

장비명 (Equipment)	제원 (Description)	제조사 (Manufacturer)	수량 (Q ' ty)	비고 (remark)
경도시험기 (Hardness Tester)	이동식 시험기 (Portable tester)	WINTO/WN-7130H	1	
온도측정기 (Thermometer)	접촉식 / 최대 500°C (Contact type, Max. 500°C)	CENTER, 300	2	
버니어 캘리퍼스 (Vernier calipers)	디지털(Digital) / 150mm	블루텍(BLUETEC)	1	
	300mm	미쓰도요(Mitutoyo)	1	
	디지털(Digital) / 600mm	블루텍(BLUETEC)	1	
깊이 게이지 (Depth gauge)	디지털(Digital) / 180mm	블루텍(BLUETEC)	1	