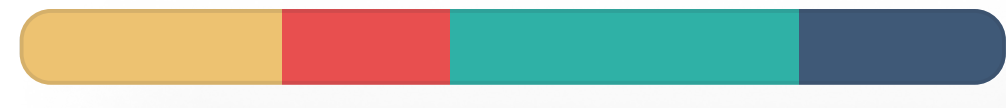


Collaborative, browser-based conceptual BIM tool

Snaptrude is a powerful, browser-based, collaborative 3D modeling tool built for architects and interior designers. It combines smart, parametric modeling, live building design information, easy real-time collaboration, and strong interoperability with BIM tools like Revit to help you design better buildings, faster.

Snaptrude allows architects to focus on designing with ease and efficiency, while creating intelligent BIM models and collaborating with the entire team. It is a tool that has the potential to transform the architecture industry, while seamlessly integrating with existing workflows.



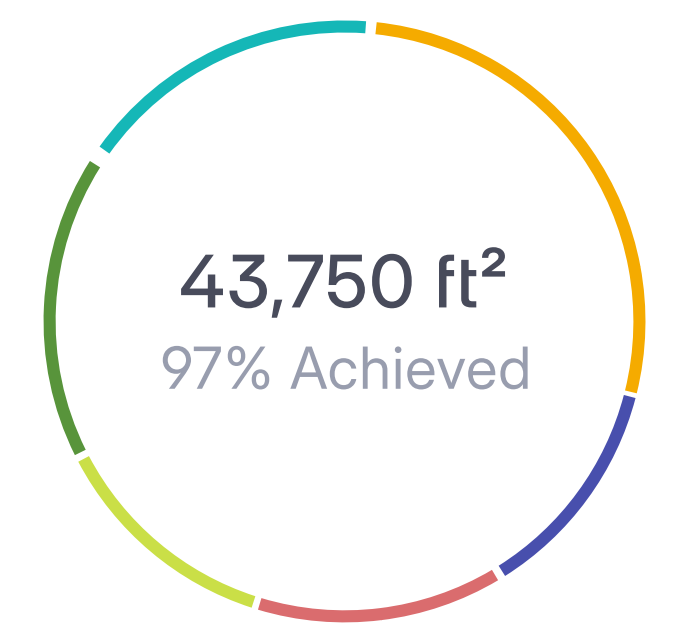
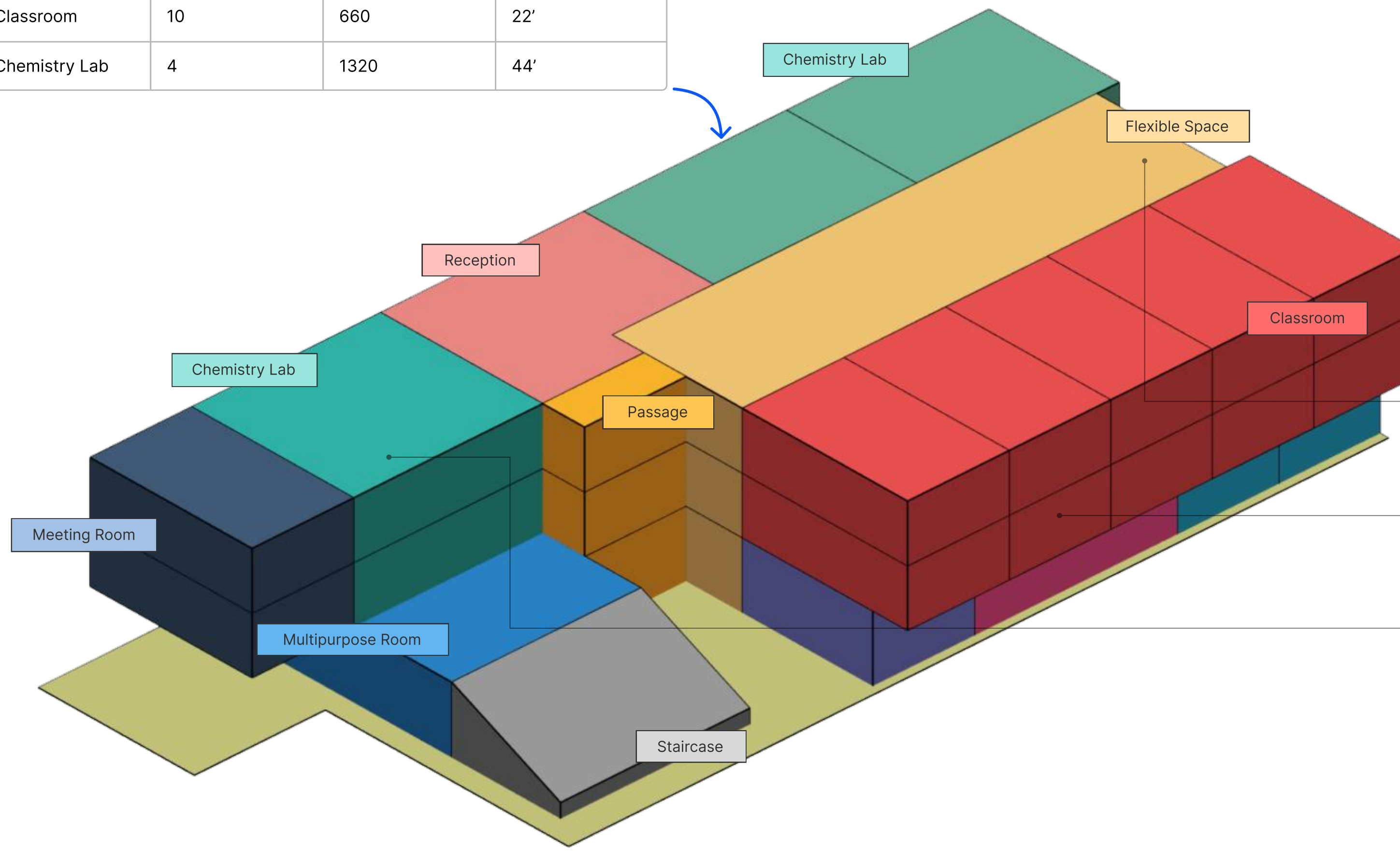


Programs to Concepts

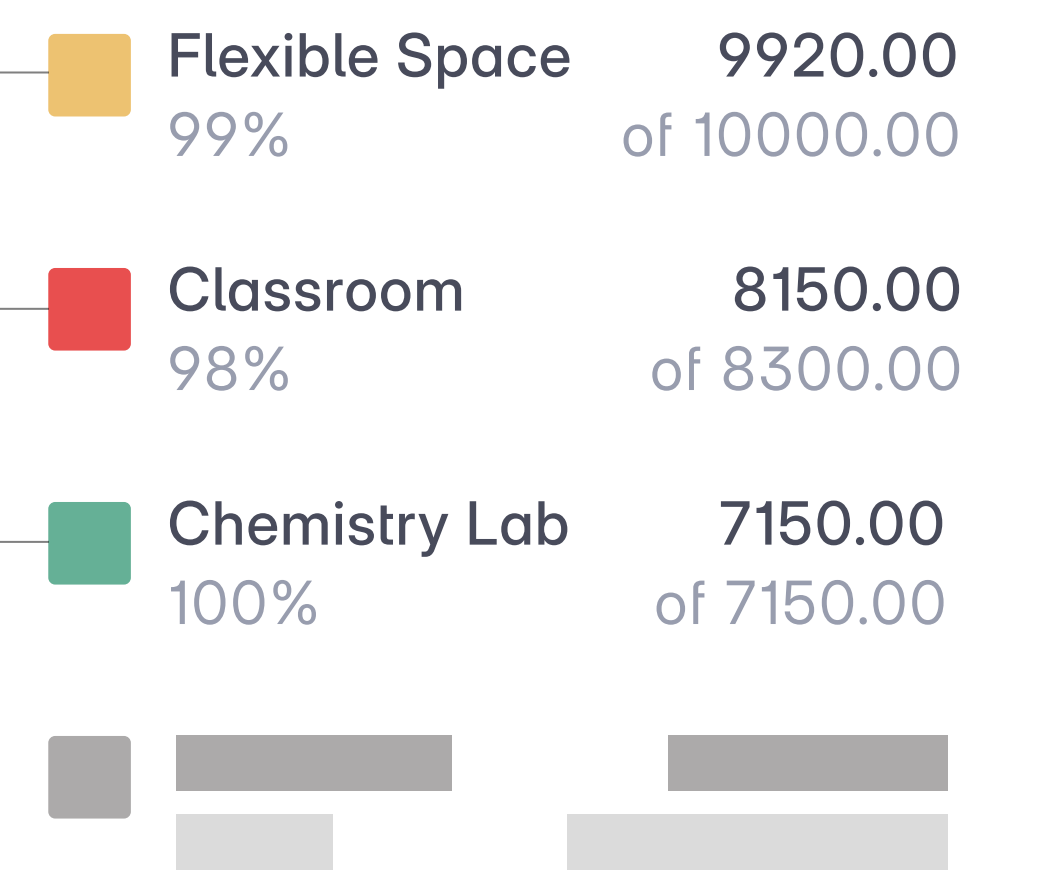
Drag and drop program briefs to instantly create massing blocks. Set target areas and track them in real-time.

Present 2D bubble drawings and iterate based on client feedback. Explore multiple solutions and reach concept designs faster.

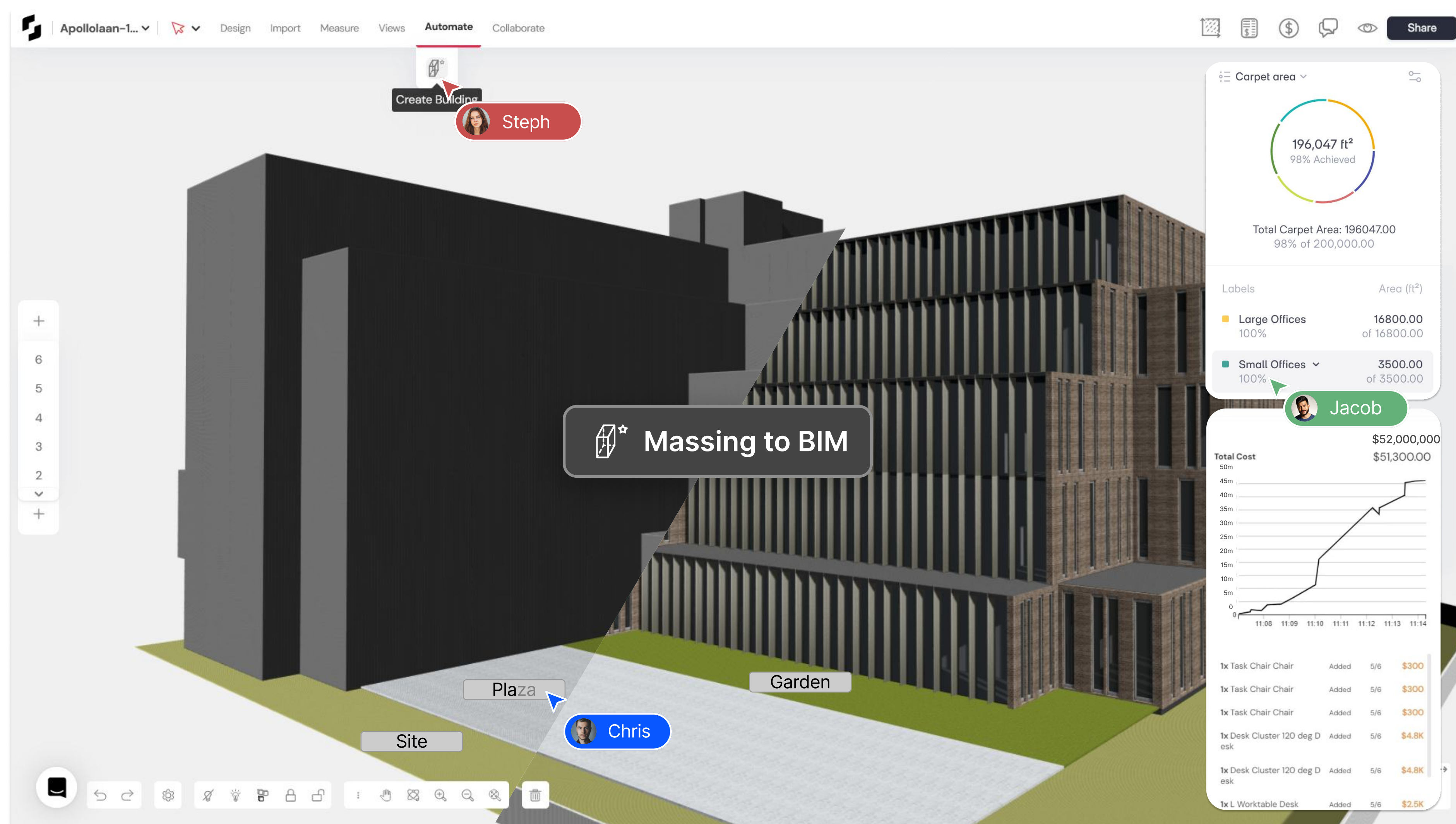
Space	Count	Area per unit	Width
Flexible Space	3	3300	30'
Classroom	10	660	22'
Chemistry Lab	4	1320	44'



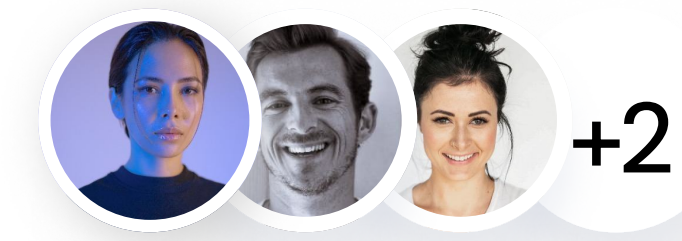
Total Built Up Area: 43750.00
97% of 45000.00



Snaptrude converts program briefs into color-coded area blocks. As you move and stack your design, area charts get updated in real-time.



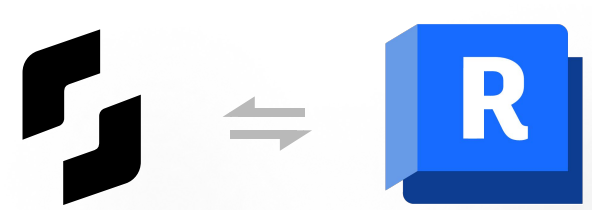
Transform a conceptual massing model to BIM with 1 click on Snaptrude. Collaborate with your team, keeping track of changes and project metrics.



Smart, collaborative BIM

Work with your team in real-time, on the browser, from anywhere in the world.

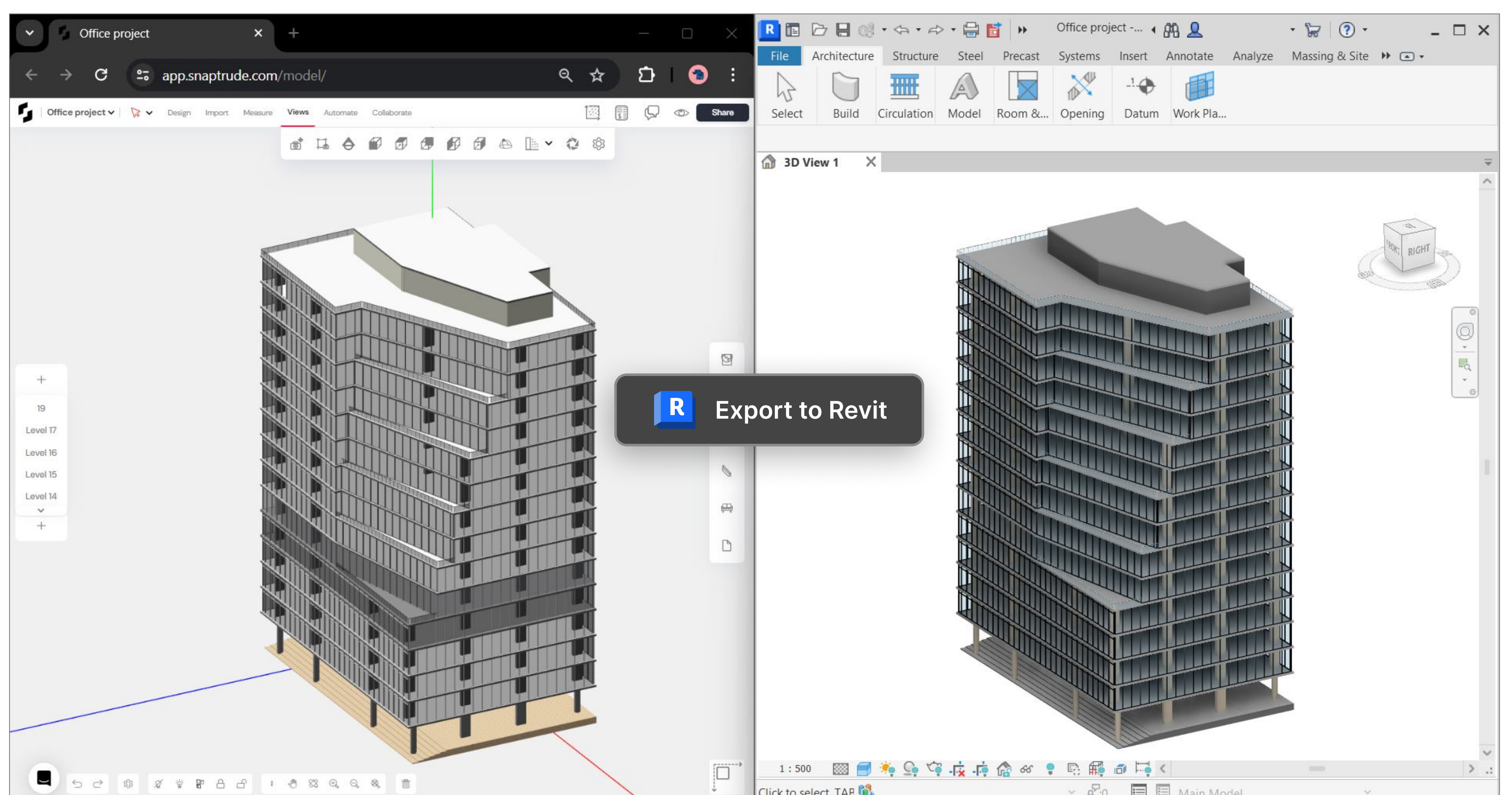
Speed up the design process for projects of all scales with parametric BIM modeling and intelligent automations.



Work with other tools

Import from Revit, AutoCAD, SketchUp, or Rhino. Export directly to Revit with fully editable object families.

Go from rapid concept design on Snaptrude to schematic and detailed design on Revit, without any rework.



The Snaptrude-Revit bi-directional link allows users to easily import and export models between Snaptrude and Revit.